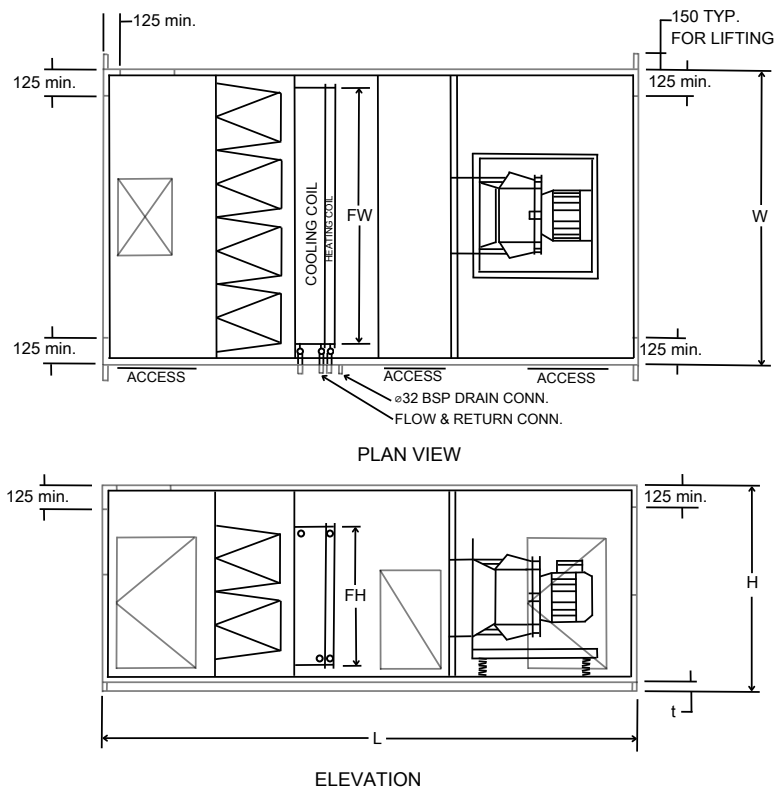


HORIZONTAL AIR HANDLING UNITS

ASH SERIES WITH AC PLUG FAN



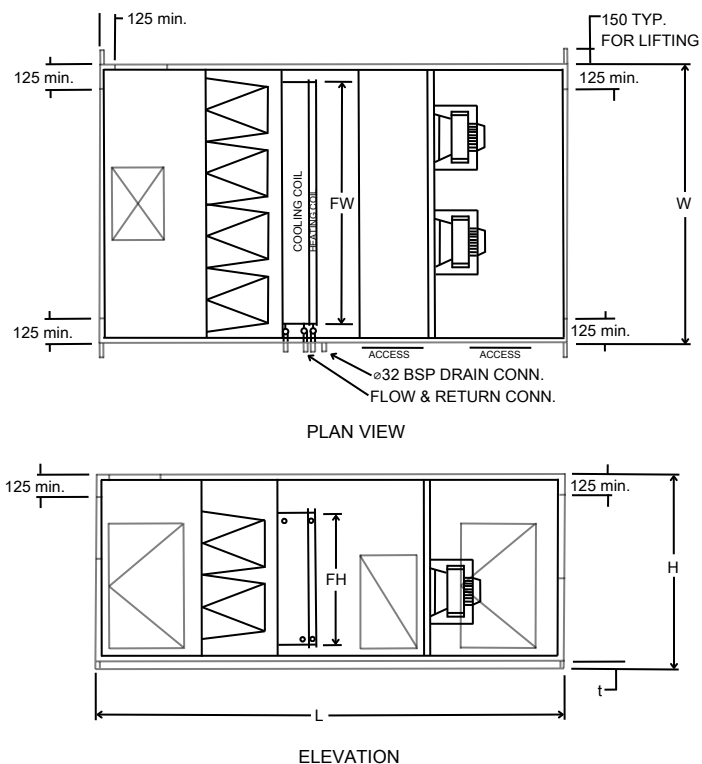
DATASHEET

MODEL	L/s	W	H	L	FW	FH (MAX)	t	No. of filters	FILTER SIZE	WEIGHT (KG)
ASH-AC 700FM	720	1470	775	4200	1125	381	75	01	610x305x600	550
ASH-AC 1500FM	1440	1470	1375	4200	1125	889	75	02	610x610x600	750
ASH-AC 2000FM	2160	2080	1375	4200	1725	889	75	03	610x610x600	970
ASH-AC 3500FM	4320	2080	1575	4600	1725	1207	75	06	610x610x600	1230
ASH-AC 5500FM	5760	2690	1875	4800	2325	2x699	75	08	610x610x600	1600
ASH-AC 8000FM	8640	2690	2400	4800	2325	2x889	100	12	610x610x600	2040
ASH-AC 10000FM	10800	3300	2400	5400	2925	2x889	100	15	610x610x600	2650
ASH-AC 125000FM	14400	3300	3025	5400	2925	2x1207	125	20	610x610x600	3380
ASH-AC 15000FM	17280	3910	3050	5400	3525	2x1207	150	24	610x610x600	4230
ASH-AC 20000FM	22500	3910	3650	5400	3525	3x953	150	30	610x610x600	4800
ASH-AC 25000FM	27500	4520	3650	5700	4100	3x953	150	35	610x610x600	5100
ASH-AC 30000FM	32500	5740	3650	6000	2500	6x953	150	45	610x610x600	5800
ASH-AC 35000FM	37500	6350	3650	6300	2800	6x953	150	50	610x610x600	6300
ASH-AC 50000FM	52500	8790	3650	6600	5240	6x953	150	70	610x610x600	7500

- NOTES**
1. All dimensions are in millimetres and are based on 50mm insulation
 2. This is not a certified drawing
 3. Right hand coil connections shown
 4. Dimensions shown are a guide only, refer Colair for accurate dimensions

HORIZONTAL AIR HANDLING UNITS

ASH SERIES WITH EC PLUG FAN



DATASHEET

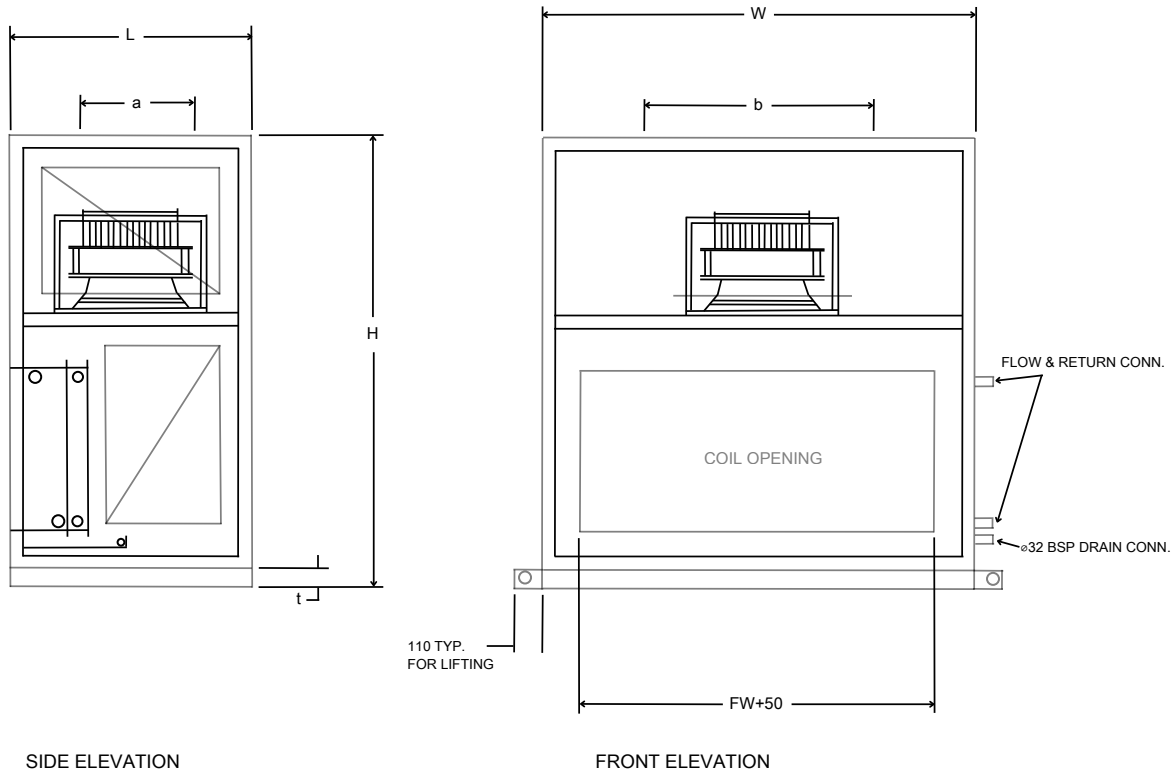
MODEL	L/s	W	H	L	FW	FH (MAX)	t	No. of filters	FILTER SIZE	WEIGHT (KG)
ASH-EC 700FM	720	1470	775	3600	1125	381	75	01	610x305x600	500
ASH-EC 1500FM	1440	1470	1375	3800	1125	889	75	02	610x610x600	700
ASH-EC 2000FM	2160	2080	1375	4000	1725	889	75	03	610x610x600	900
ASH-EC 3500FM	4320	2080	1575	4200	1725	1207	75	06	610x610x600	1175
ASH-EC 5500FM	5760	2690	1875	4200	2325	2x699	75	08	610x610x600	1525
ASH-EC 8000FM	8640	2690	2400	4200	2325	2x889	100	12	610x610x600	1975
ASH-EC 10000FM	10800	3300	2400	4800	2925	2x889	100	15	610x610x600	2575
ASH-EC 125000FM	1440	3300	3025	4800	2925	2x1207	125	20	610x610x600	3300
ASH-EC 15000FM	17280	3910	3050	4800	3525	2x1207	150	24	610x610x600	4150
ASH-EC 20000FM	22500	3910	3650	4800	3525	3x953	150	30	610x610x600	4400
ASH-EC 25000FM	27500	4520	3650	4800	4100	3x953	150	35	610x610x600	4900
ASH-EC 30000FM	23500	5740	3650	4800	2500	6x953	150	45	610x610x600	5500
ASH-EC 35000FM	37500	6350	3650	4800	2800	6x653	150	50	610x610x600	6300
ASH-EC 50000FM	52500	8790	3650	4800	5240	6x653	150	70	610x610x600	7200

NOTES

1. All dimensions are in millimetres and are based on 50mm insulation
2. This is not a certified drawing
3. Right hand coil connections shown
4. Dimensions shown are a guide only, refer Colair for accurate dimensions

VERTICAL AIR HANDLING UNITS

ASV SERIES



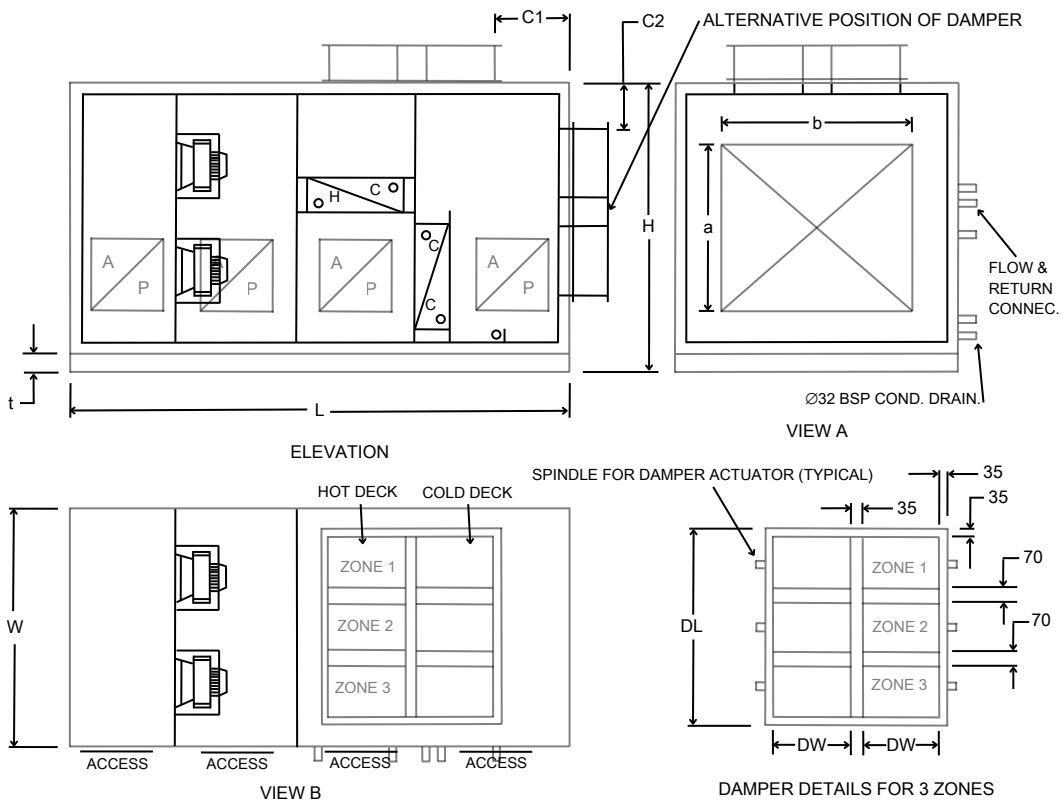
DATASHEET

MODEL	L/s	W	H	L	FW	FH (MAX)	a	b	t	kW	WEIGHT (KG)
ASV 1000	1000	1100	1475	950	750	571.5	289	331	75	2.2	400
ASV 1500	1500	1470	1725	1100	1125	698.5	404	471	75	2.2	500
ASV 2000	2000	2080	1925	1200	1725	825.5	478	557	75	4	700
ASV 3500	3500	2080	2325	1325	1725	1016	638	638	75	5.5	875
ASV 5500	5500	2690	2825	1575	2325	1270	801	801	75	7.5	1325
ASV 8000	8000	2690	3425	1700	2325	1700	898	898	100	15	2000
ASV 10000	10000	3300	3650	1825	2925	1700	1007	1007	100	18.5	2525

- NOTES**
1. All dimensions are in millimetres
 2. This is not a certified drawing
 3. Left hand coil connections shown
 4. Dimensions shown are a guide only, refer Colair for accurate dimensions

MULTI-ZONE AIR HANDLING UNITS

ASMZ SERIES



DATASHEET

MODEL	L/s	W	H	L	DW	DL	a	b	t	C1	C2	kW	WEIGHT (KG)
ASMZ 1000	1000	1100	1200	2400	295	950	570	750	75	265	125	2.2	475
ASMZ 1500	1500	1470	1390	2400	360	1250	700	1050	75	265	125	2.2	675
ASMZ 2000	2000	2080	1575	2800	360	1550	825	1350	75	265	125	4	900
ASMZ 3500	3500	2080	1860	3000	515	1780	1020	1575	75	265	125	5.5	1025
ASMZ 5500	5500	2690	2240	3400	640	2390	1270	2175	75	270	125	7.5	1600
ASMZ 8000	8000	2690	2860	3800	830	2390	1700	2175	100	290	125	15	2400
ASMZ 10000	10000	3300	2860	4000	810	3000	1700	2725	100	310	125	18.5	2850
ASMZ 12500	12500	3300	3000	4600	940	3610	1730	3325	100	200	125	30	3300
ASMZ 15000	15000	3910	3800	5000	1125	3610	2340	3325	100	320	125	37	4200

NOTES

1. All dimensions are in millimetres
2. This is not a certified drawing
3. Right hand coil connections shown
4. Dimensions shown are a guide only, refer Colair for accurate dimensions